



Humanities, Arts & Social Sciences ARC Centres of Excellence Workshop

The ARC Centre of Excellence for Indigenous Futures

CD, Brendan Hokowhitu

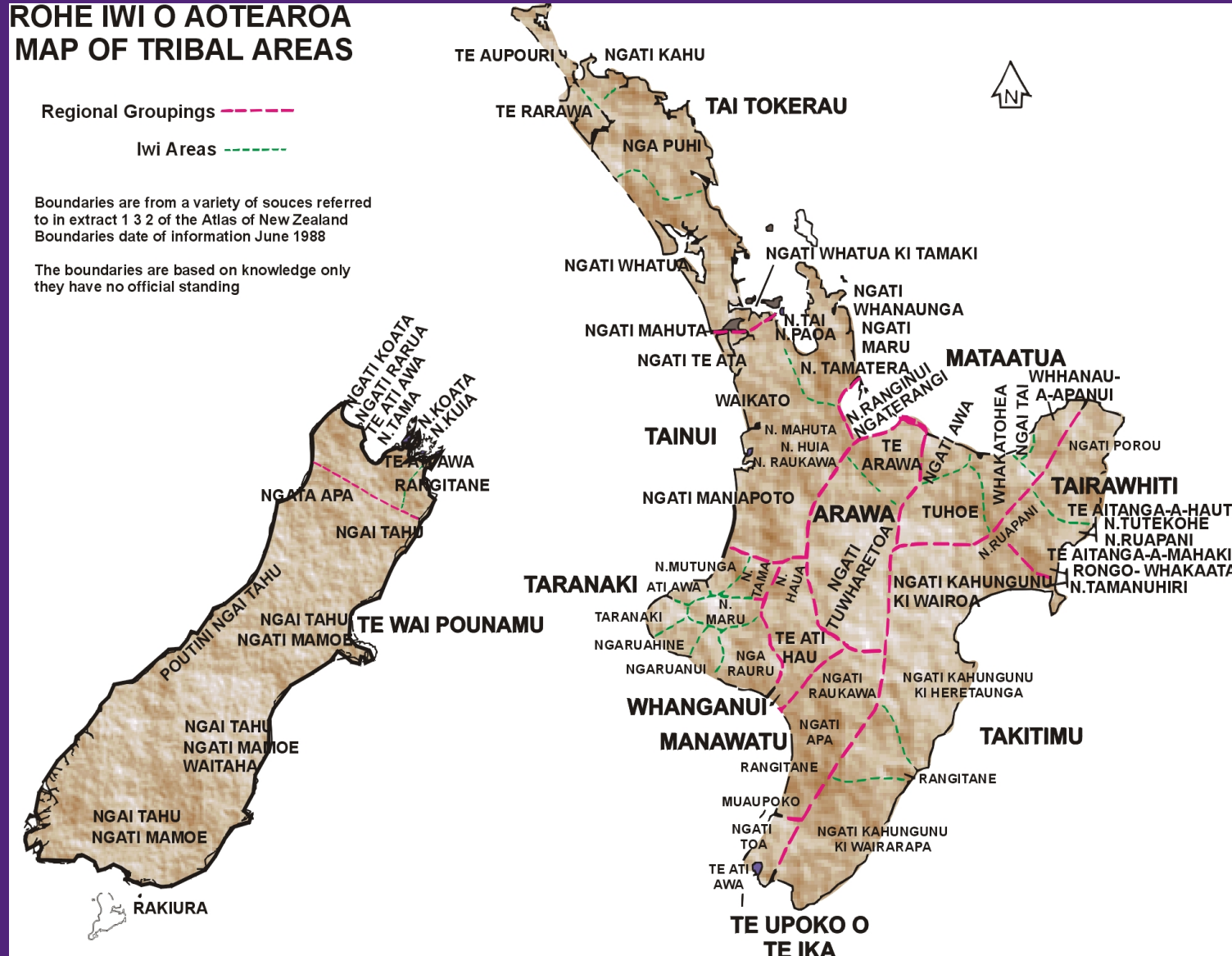


ROHE IWI O AOTEAROA MAP OF TRIBAL AREAS

Regional Groupings ---
Iwi Areas ---

Boundaries are from a variety of sources referred to in extract 1.3.2 of the Atlas of New Zealand
Boundaries date of information June 1988

The boundaries are based on knowledge only they have no official standing





Ko Mataatua te waka



Ko Ngāti Pūkenga te iwi



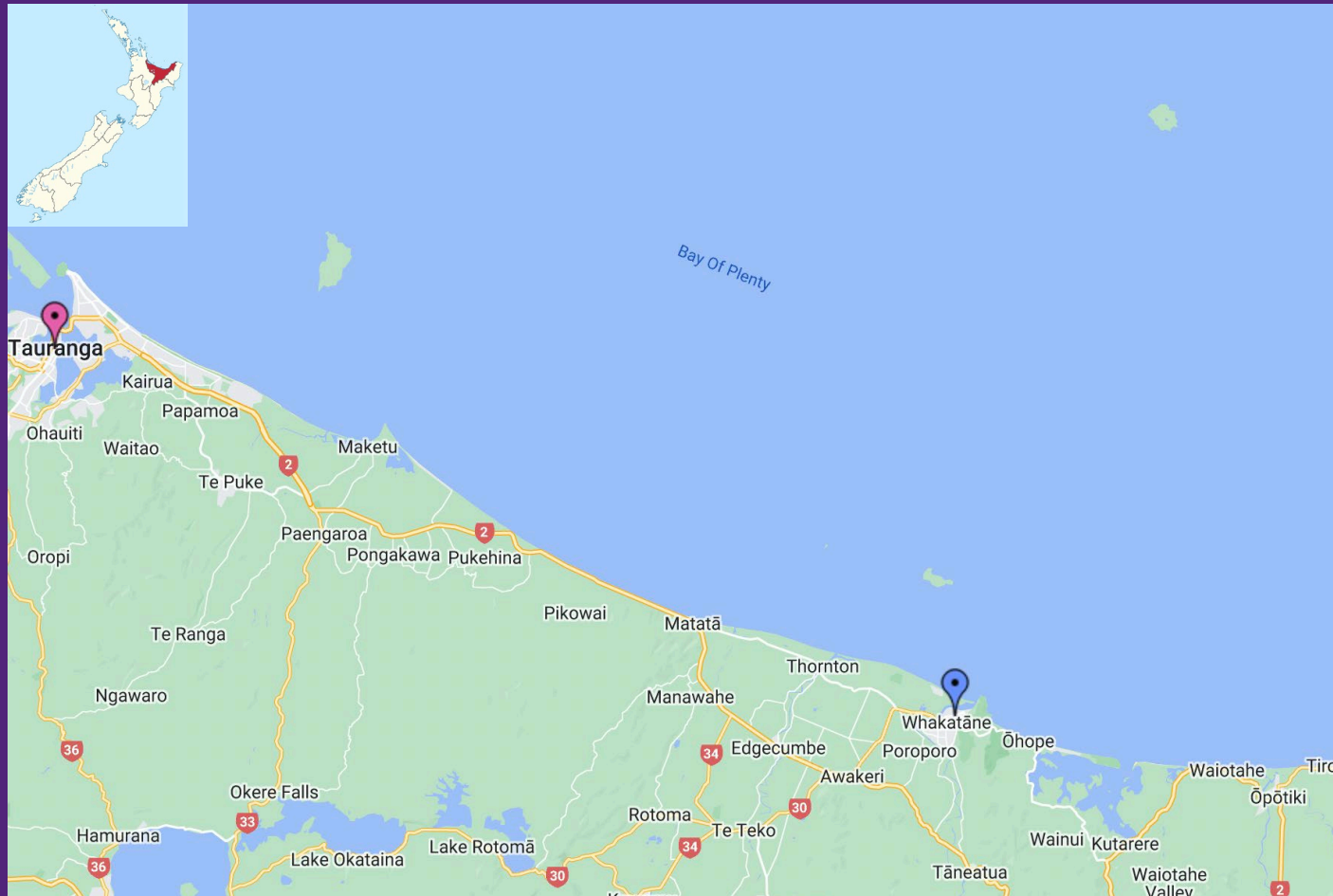
Pūkenga was born and grew up in the eastern Bay of Plenty at Rūātoki; a fifth-generation descendant of Toroa, captain of the Mataatua waka.

(Ngāti Pūkenga Ratification Booklet, 2012).

Ko Tauranga te moana,
Ko Mauao te maunga



Ko Ngāti Pūkenga ki Maketū te hapū



Ngāti Pūkenga Deed of Settlement Economic Redress



Indigenous Worldviews and Divisions of knowledge

Division of Sciences

Division of Business/Economics

Division of Health Sciences

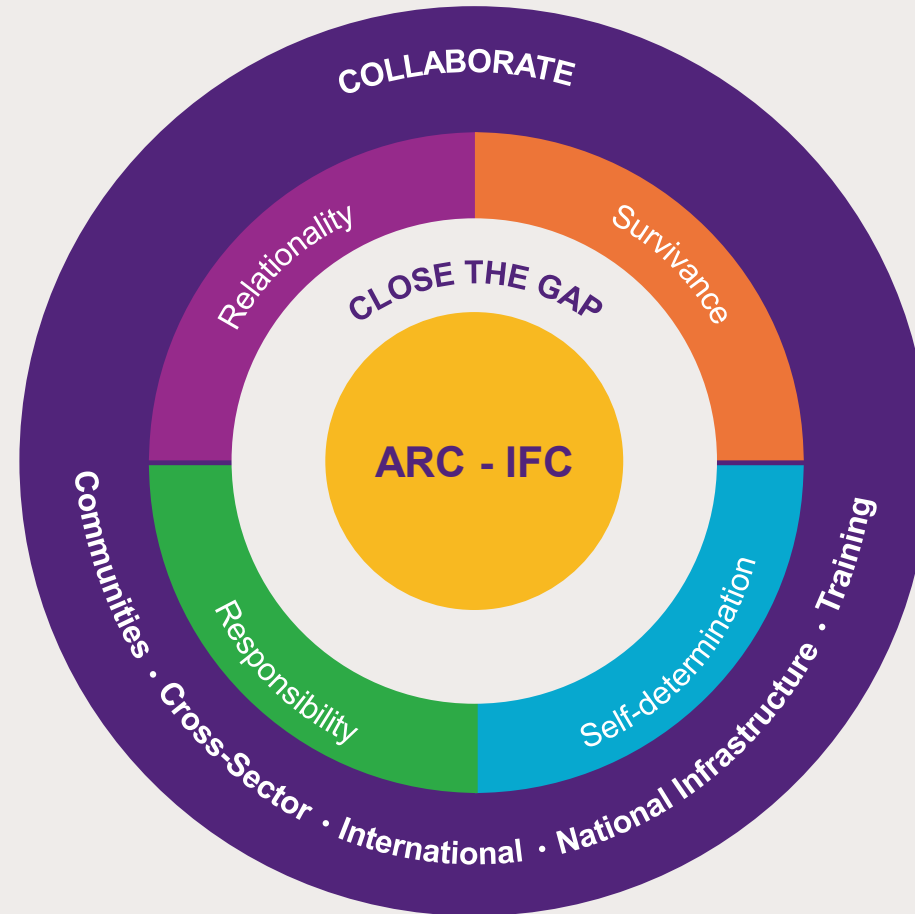
Division of Arts and Humanities

[Genealogy] is a way of playing local, discontinuous, disqualified, or nonlegitimized knowledges off against the unitary theoretical instance that claims to be able to filter them, organize them into a hierarchy, organize them in the name of a true body of knowledge, in the name of the rights of a science that is in the hands of the few (Michel Foucault 2003: 9).

Being Indigenous

The origins of Indigenous sovereignties are in and of the earth. We draw on and exert the life-force we share with and derive from our creators, ancestors and relatives that inextricably unite us with the earth and to our respective shared territories. We have origin stories that emanate from and connect us as humans and non-humans... I use the term non-human to refer to all things that do not have human form. Our ontologies, our ways of being Indigenous are inextricably connected to being in and of our lands. This is an inherent sovereignty... (Distinguished Professor [Aileen Moreton-Robinson](#))

Key Principles and Values



A Revolutionary Research Framework



Revolutionary Research Framework and Design

- Relational
- Transdisciplinary and trans-sector approach
- Indigenous Led, designed and implemented



Collaborating with Indigenous partners and communities



Within Social and Cultural Context

- Everything is interconnected



Based on Indigenous survivance and self-determination

Marnee Shay



Pat Dudgeon



Yvette Roe



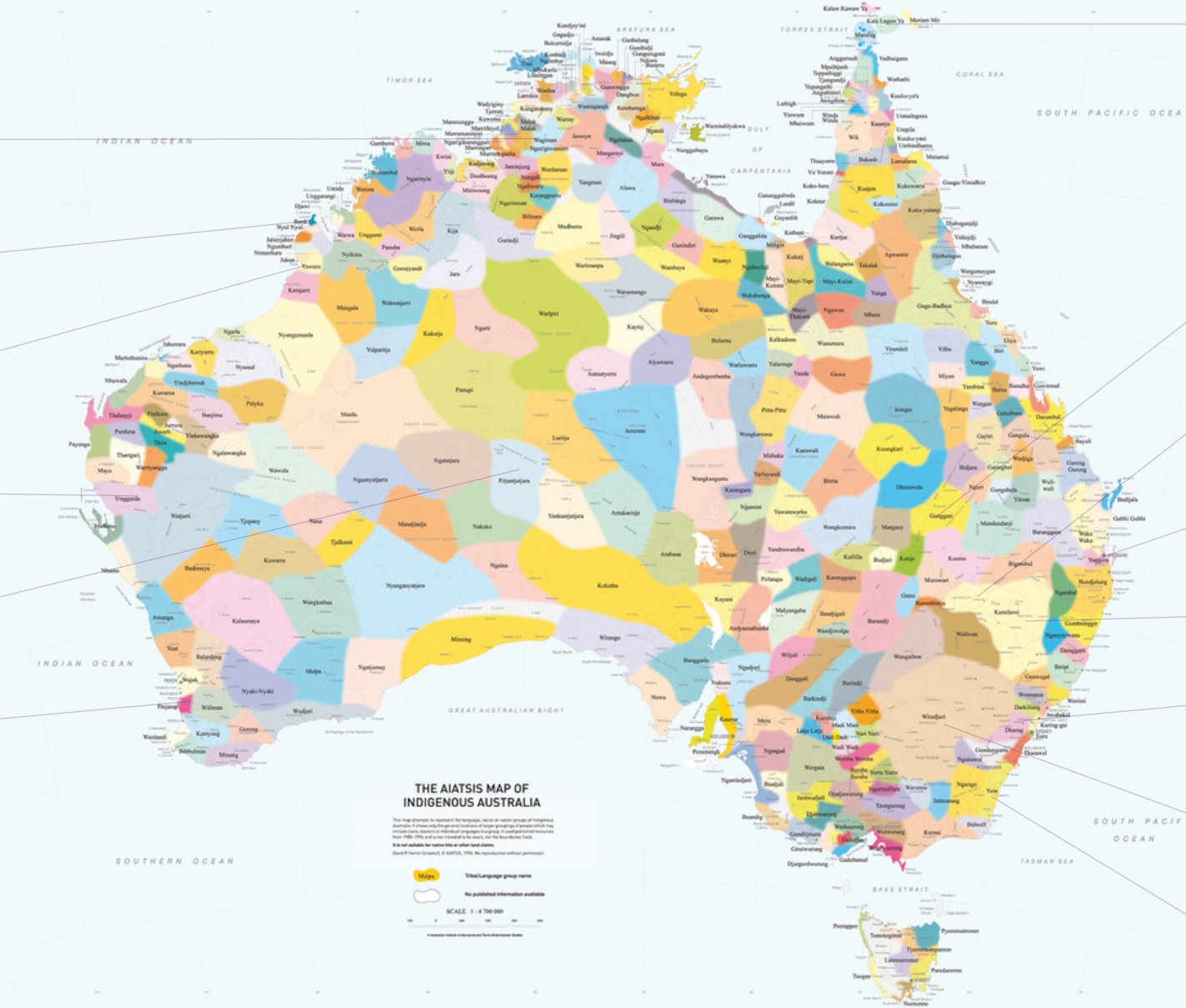
Crystal McKinnon



James Ward



Sandra Eades



Maria Raciti



Asmi Wood



Roxanne Bainbridge



Larissa Behrendt



Aileen Moreton-Robinson



Bronwyn Fredericks



Paul Gray



Gail Garvey



Susan Beetson



Megan Williams



Amanda Porter

Internationally Leading Indigenous Researchers



Brendan
Hokowhitu



Aileen
Moreton-Robinson



Bronwyn
Fredericks



James
Ward

Collaborating Universities



Global Partner Investigators and Universities



Linda Tuhiwai
Smith



Janine
Mohammed



Chris
Andersen



Tracey
McIntosh



Jarrod
Haar



Vision



An equitable Australia
for Indigenous Peoples by 2050

Closing the Gap is Imperative



Our Centre is a **global first** that will close the gap on the inequities so that Indigenous Australians can **prosper**.

Legacy: Indigenous Prosperity is the Future

Close the Gap by 2050



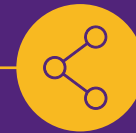
Shared
Decision-Making



Community
Control



Institutional
Transformation



Shared Access
to Data



Our Relational Research Program's three Themes and nine Projects

Health & Wellbeing

Indigenising Health Policy

Empowering Indigenous Health Communities of Practice

Culturally Responsive and Empowering Health Institutions

Education & Economies

Nourishing Indigenous Education

Transformative Indigenous Economies and Business

Successful Pathways to Survivance

Law & Justice

Deaths and Survivance in Custody

Survivance and Correctional Services Programs

Community Survivance





National Indigenous Knowledges Infrastructure: Australia's First Indigenous-led Public Policy Think Tank

- Clearing house for Indigenous social and cultural policy research databases and models
- Hub of Indigenous inequity knowledge

Why Indigenous Led?



Being Indigenous
is a strength



We are part of the
Indigenous
communities



Indigenous
standpoint
gives insights



Majority of the research
money has gone to non-
Indigenous researchers



Established, positive
relationships with our
community-based partners



Our social and
cultural context –
a shared life force



Deeply
committed –
**these are
our families**

Community Partners



Australian
Human Rights
Commission



ALS
Aboriginal Legal Service (NSW/ACT) Limited



SNAICC
National Voice for our Children



South Eastern Australian
Aboriginal Justice Services
Limited



Australian Government
Australian Institute of
Health and Welfare



National Indigenous
Australians Agency



CAPE YORK
PARTNERSHIP



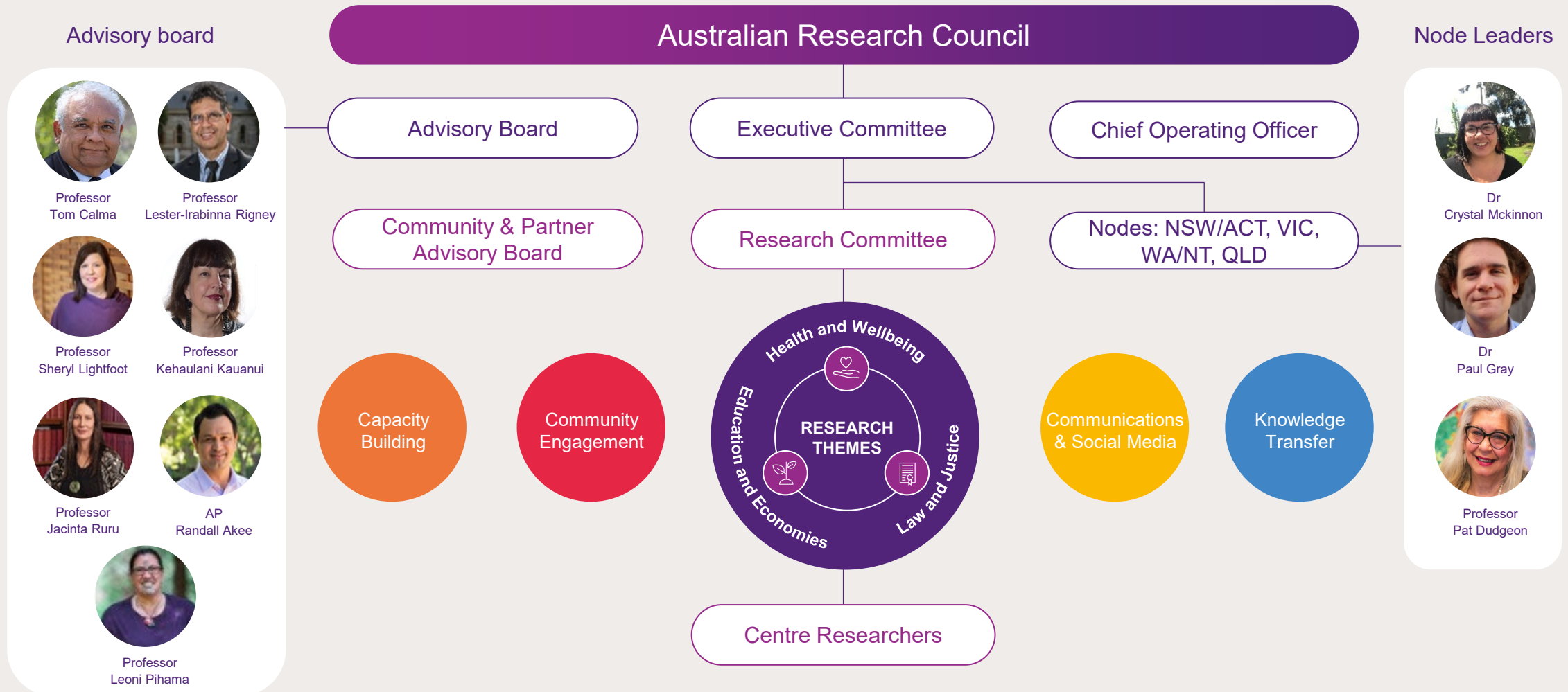
Australian Government
Department of Health



Australian
Indigenous
Mentoring
Experience



Centre Governance – A Powerful Brainstrust



Building Australia's Next Generation of Indigenous Researchers

1.

Indigenous
Preparation Program

2.

Indigenous
Capacity Building

3.

Transector
Engagement

4.

Relational Research
Program & NIKI



Indigenous Preparation Program

A relational transdisciplinary capacity
building and mentoring program:

Masterclasses
& Workshops

Writing
Retreats

Research
Pilot
Program

Internships



Ngā mihi. Thank You!

(and good luck...)